

Southern Responder

Fall 2002

www.swsefr.com

Safety First, Safety Always

What's Inside...

**Vacuum
Excavation** ...2

**Molten Sulfur
Transfer** ...2

Safety Tip ...2

Sampling Project ...3

**Employee
Spotlight** ...3

Training At SWS ...3

**SWS Service
Center Locations** ...4

Words of Wisdom

"A pessimist sees the difficulty in every opportunity; an optimist sees the opportunity in every difficulty."

- Sir Winston Churchill
(1874-1965)



Corporate Address:
1619 Moylan Road
Panama City Beach, FL 32407
Phone: (850) 234-8428
Fax: (850) 234-2451
swsinfo@swsefr.com
www.swsefr.com

Message From The President

Summer of 2002 is in our rearview mirror while 2003 is in our windshield. These days it seems like time is passing just that fast. SWS has been moving at a feverish pace and our clients are not only driving the speed but are benefiting from it. Through vigorous training, equipment purchases and corporate support of the "Local Service Centers", SWS strives daily to continue as the premiere response contractor in the nation.

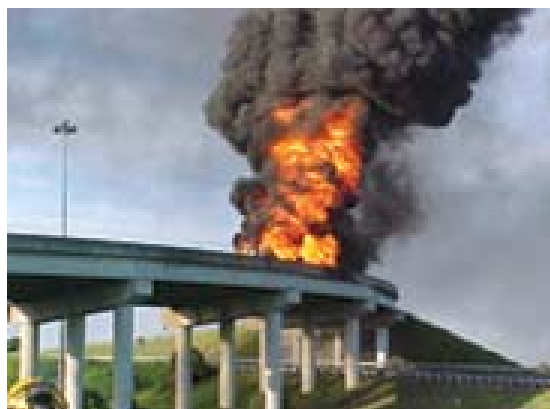
We have long compared this industry to fire fighting. SWS staffs, equips, trains and prepares our employees and equipment for calls that may never come. The difference is in the funding. Municipalities support fire fighters and hope they never need them. If SWS doesn't respond, we don't receive a dime of support. We would love to say that we hope our clients never need us, however that is just not true. Our very survival depends on our clients having unfortunate incidents. Our professional handling of those incidents is what allows our customers the confidence to call one number for all of their emergency needs. To quote our good friend Tom Murta of CSX Transportation, "SWS

is a roll-over contractor, you call them and then you roll-over and go back to sleep." This is the level of confidence we want to continue to bring to our customers. Thank you for your continued support.

This is why customer feedback is very important to our growth as a business. We need to know what type of job we are doing. Constructive criticism is as important as positive feedback and this type of customer review provides invaluable information regarding programs targeted at retaining and increasing our competency in the emergency response industry. Though occasionally we won't see eye to eye on every aspect of our interaction, our goal is to understand different viewpoints and offer ours in a respectful manner so that the end result includes the best decisions regarding each incident. Please feel free to call me personally at 1-800-852-8878. If you want to be sure and reach me directly, call after hours - I take calls 75% of the time and appreciate all feedback.

James J. Weber Jr.

Fuel Tanker Explodes On Busy Interstate Overpass



In August of this year, the driver of a fuel tanker lost control of his vehicle as he was traveling down an off ramp for Interstate 4 in Orlando, Florida. Consequently, the tanker rolled onto its side, exploded and burned until the local Fire Department was able to extinguish the fire.

SWS arrived on scene ready to assist the local fire department in minimizing the impact of the fire and leaking tanker on the surrounding environment. Once fire authorities extinguished the fire, a fire watch was established and the SWS Haz-Mat response team brought in a vacuum truck to extract between 700 and 800 gallons of remaining water, gasoline and AFFF (aqueous film forming foam) mixture.

Compartmentalization of the tanker prevented the entire

contents from leaking out onto the surrounding environment, however, more than 2,000 gallons of the water, gas and AFFF mixture had already descended to the adjacent culvert below. The culvert acted as a natural containment and prevented flow into the storm drains. Response team members vacuumed the mixture and disposed of it. OVD readings and pre-burn analysis from the soil below were conducted and indicated a contaminated plume requiring the removal of approximately 36 yards of soil. The remediation was promptly completed and with confirmation samples returned rapidly, backfill and sod were in place within days of the incident. Special thanks to the Orlando Service Center and the local Fire Department.



OPERATIONS MANAGERS EMAIL DIRECTORY

Stuart Burman, Ft. Myers
burman@swsefr.com

Jim Coiner, Savannah
coiner@swsefr.com

Larry Hall, Atlanta
hall@swsefr.com

Neal Jones, Decatur
jones@swsefr.com

Darryl King, St. Pete
king@swsefr.com

Renard Manley, Orlando
manley@swsefr.com

Harry Marsh, Panama City
marsh@swsefr.com

Mike Morris, Ft. Lauderdale
morris@swsefr.com

Ricky Nelson, Tallahassee
nelson@swsefr.com

Darrell Pierson, Birmingham
pierson@swsefr.com

Robert "Biff" Raymond, Tampa/St. Pete
raymond@swsefr.com

Jorge Sanchez, Panama City
sanchez@swsefr.com

Ken "KC" Straub, Lake Wales
straub@swsefr.com

Brian Turini, Tampa
turini@swsefr.com

Butch Warden, Pensacola
warden@swsefr.com

Jim Weber Jr, Corporate
weberjr@swsefr.com

BUSINESS DEVELOPMENT EMAIL DIRECTORY

Daniel Barrett
Alabama, Georgia, Tennessee
barrett@swsefr.com

David Bloom
Central & South Florida
bloom@swsefr.com

Jamie Michael
Corporate
jamie@swsefr.com

Frank Padula
North Florida, Georgia, Alabama
padula@swsefr.com

Jeff Ross
South Florida
ross@swsefr.com

John Russell
North Florida, Georgia
russell@swsefr.com

Greg Williams
Customer Service
williams@swsefr.com

Vacuum Excavation - Technology For Today's Contractors

Vacuum excavation uses either fan or positive displacement to move air in a vacuum truck. Soils are penetrated, expanded and broken up for vacuuming by utilizing one of two means to break up the soil; hydro or air systems. Hydro-excavation uses water to break down the soil and convert it to a slurry stream. Air systems use air to break up the soil.

Horizontal Directional Drillers pioneered the use of vacuum trucks for excavation. Initially, they were used to retain and dispose of excess slurry spoils, locate underground utilities in a boring path and sometimes even find their submerged drill head. Today, you'll find an ever increasing presence for the use of vacuum trucks, and specifically- vacuum excavation, in a variety of capacities. Trenching, utility location and repair, soil clearing for shrubs and



SWS recently acquired this new VAC-CON industrial loader unit specially equipped with a hydraulic, rear mounted, pendant control, high dumping system. This unique high dumping system allows liquids and solids within the tank to be dumped directly into 60" containers without having to pull onto ramps, berms, elevations, etc. This new unit is ideal for performing hydro and air systems excavation.

trees and minor horizontal boring are just some of the many applications that are expedited and tend to minimize materials and equipment normally required with traditional means using shovels, backhoes or trackhoes.

Another factor in favor of vacuum excavation is the reduction in the risk of damaging underground utilities, storage tanks and personnel. Vacuum excavation turns a back-breaking and dangerous job into a fast, simple, and safe process.

The future of vacuum excavation looks bright. Now more than ever, utility contractors, manufacturers, drillers, construction companies and others are finding new applications for these high powered vacuum trucks with an increasing realization that digging with air and water can be safer, provide more versatility, and be more efficient than conventional tools.

Derailment Forces Reheating & Transfer Of Molten Sulfur

SWS recently completed a project involving the transfer of eight rail cars initially filled with molten sulfur that were involved in a derailment and had consequently hardened due to the loss of heat.

The derailment caused extensive damage to the heating coil system on all of the cars. SWS crews spent two days cutting away jackets, welding coil cracks, and building jumpers on the heater coils. Once the heater coils were repaired and operational, a portable boiler was brought in to begin heating the cars in an effort to return the sulfur to its molten state. Multiple teams worked around the clock for over a week. Although it was a slow and arduous process over the course of seven days, the team strategically and successfully heated up and transferred all eight cars.

Due to the specialized training and veteran knowledge of the SWS Operations Managers on scene, the entire procedure was accomplished in an extremely efficient and timely fashion. "I don't recall any contractor being able to heat up and transfer eight cars in seven



days", explained Butch Warden, Project Manager. SWS is proud of that accomplishment, and it couldn't have been such a success without a great crew. Special thanks to Harry Marsh, Don Jamison, Doug Frederick and James Paulk.

Safety Tip

Job site control is paramount when minimizing further contamination of the environment, public property and employees during emergency situations. Begin by preparing a map. The degree of site control necessary depends directly on particular site characteristics such as landmarks and topographical features that a map can provide. Establish and strictly enforce decontamination procedures for both personnel and equipment. This procedure may need to be modified based on changing conditions throughout the duration of activities. Effective security measures should never be underestimated. The press or local community should never have an opportunity to unknowingly put themselves in harms way. The appropriate sequence for implementing these measures should be determined on a site-specific basis. In many cases, it will be necessary to implement several

Bulk Drum Sampling & Analysis

In April of 2002, SWS commenced sampling, analysis and segregation of more than 400 55-gallon drums containing unknown materials located in Northern Alabama.

The preliminary steps included locating and isolating all drums lacking proper documentation and/or labeling. With the drums containing potential unknown hazards, the initial samplings required level B personal protective equipment to ensure the safety of the team members during this phase of the project.

The next phase required the utilization of a numbering system which would eventually allow the team to label each drum and monitor its progress during the project. The initial estimate revealed a total of 414 needed samples in order to accurately segregate each drum. Given the visual characteristics, pH, and quantity of samples, it was determined that the EPA approved process of bulk sampling would be the most efficient and cost effective way of providing analysis.

This process involves segregating drums based on visual charac-



teristics and pH levels, eliminating the need to sample each unknown drum. With the numbering system in place, SWS was able to systematically gather and compile all samples needed for segregation, thereby reducing the number of samples needed from the original 414 to 107. Once analytical information was returned, SWS was able to present the client with sufficient information to properly dispose of all drums handled in this project. By utilizing the numbering system and bulk sampling technique, the client realized a savings of over \$100,000 in analytical expenses.

EMPLOYEE SPOTLIGHT



SWS is proud to recognize Raymond Baxter in this issue of the *Southern Responder*. Since joining the SWS Team over five years ago, Raymond has proven himself a tremendous asset to the company.

Working at the Savannah Service Center, Raymond's responsibilities range from Business Development to Field Operations to Office Management. From a background including EMT/Firefighting and Hazmat, Raymond's past experience enhances his capabilities. His organizational ability provides stability in the seemingly chaotic atmosphere of emergency response.

With teamwork at the heart of SWS operations, Raymond's attention to required safety practices for him and teammates ensure that incidents are handled in a safe manner. Of course, a description of Raymond's

talents would not be complete without mentioning his indispensable technical knowledge of computers. Many fellow employees at SWS have benefited from Raymond's help with computers and other electronics.

Born and raised in Ocala, Florida, Raymond is a truly devoted family man with a beautiful home and family. Softball, hunting and surfing the internet are just some of the things that Raymond enjoys in his off time.

Raymond continues to grow in his professional career in our field of environmental emergency response and his overall attitude and willingness to travel anywhere at any time to meet SWS and client needs makes it a pleasure to send congratulations to Raymond Baxter – our Employee in the Spotlight!

Built On Training

SWS has grown by leaps and bounds since its inception in 1988. The company, uniquely positioned in this competitive marketplace, builds on various goals in order to achieve long term success. One set of goals involves employee excellence. SWS continually educates, develops, and challenges employees throughout their career. SWS strives to ensure that technicians to incident commanders are up to date with the latest technological advances, industry standard practices and applicable training for Emergency Response.

Basic training begins with a 40 hour HAZWOPER/Emergency Response training class. Personnel learn how to perform as responders for hazardous materials releases on land or in the marine environment. Additional employee training includes American Red Cross CPR and First Aid Training, Bloodborne Pathogens, Confined Space Rescue and Driver Training. In order to provide specialized services for terminal facilities, shipyards, chemical plants, and other industrial settings, SWS employees attend particularized classes geared toward specific work settings.

Examples of these specialized training sessions include Railroad Safety Training, Traffic Safety Training, and Excavation Safety.

In addition to "classroom" training, hands on training plays an important and immeasurable role in the field of emergency response. Throughout the typical career path of an employee, he or she continually gains knowledge and practical experience under the supervision of thoroughly trained and experienced project managers. This hands on helps to develop a distinct, sound, operational identity and facilitates internal promotion to supervisory and management positions. SWS ensures candidates complete supervisor's training which is accomplished through real world scenarios, internal training, and attendance of professional development seminars from accredited institutions. (See Sidenote)

SWS realizes the value of trained, competent employees and is committed to furthering the level of expertise SWS brings to any project through aggressive education programs.

In The News...

SWS is currently in the process of constructing a compressed gas transfer trailer. When on-site, the trailer will be self-reliant with the ability to compress, pump, flare, and transfer most compressed gases from rail cars and trailers. The unit will be fully operational by mid-October. For more information call Butch Warden in the Pensacola office.

During the first quarter of 2002, SWS conducted a mailed survey to ensure that past and present clients were receiving the Southern Responder, SWS' quarterly newsletter publication. Those who took the time to complete the survey and return it were eligible for a cash prize drawing of \$500.00. Congratulations to Daniel Townsend of Qore Property Sciences who became the lucky winner!

Sidenote...

One such institution is the Transportation Technology Center, Inc. located in Pueblo, Colorado where solutions for railroad and highway disasters are mastered. Participation in numerous drills, conferences, tabletop exercises and real world experiences shape how our incident commanders prepare themselves. Although the names and places of these scenarios should be kept anonymous, they play a vital role in how incident commanders refresh and fine tune their skills. SWS managers have been in a regular attendance rotation here since 1998.





1619 Moylan Road
Panama City Beach, FL 32407
Phone: (850) 234-8428
Fax: (850) 234-2451
swsinfo@swsefr.com
www.swsefr.com

PRSR STD
U.S. POSTAGE PAID
TAMPA FL
PERMIT NO. 252

**24 HOUR
EMERGENCY RESPONSE**
1-800-852-8878

- *Emergency Spill Response*
- *Industrial Cleaning & Maintenance*
- *Haz & Non-Haz Waste Disposal Services*
- *Vacuum Truck & Industrial Loader Services*
- *Sorbent Products & Spill Control Equipment*
- *Remediation*
- *Sampling*
- *Training*

Southern Responder

St. Petersburg, FL
8100 Park Blvd, Suite A-36
Pinellas Park, FL 33781
Phone: (727) 546-6193
Fax: (727) 546-5365

Tampa, FL
901 McClosky Blvd
Tampa, FL 33605
Phone: (813) 241-0282
Fax: (813) 241-6765

Pensacola, FL
1783 West Nine Mile Rd
Pensacola, FL 32534
Phone: (850) 969-0092
Fax: (850) 969-0094

Ft. Lauderdale, FL
3133 NW 25th Ave
Pompano Beach, FL 33069
Phone: (954) 957-7271
Fax: (954) 957-7807

Orlando, FL
1010 North Hoagland Blvd
Kissimmee, FL 34741
Phone: (407) 870-8499
Fax: (407) 870-8519

Ft. Myers, FL
8236 Engle Place, Unit 3
North Ft. Myers, FL 33903
Phone: (239) 995-4330
Fax: (239) 995-4330

Lake Wales, FL
6448 SR 60 East
Lake Wales, FL 33853
Phone: (863) 696-1189
Fax: (863) 696-0998

Panama City Beach, FL
1619 Moylan Rd
Panama City Beach, FL 32407
Phone: (850) 234-8428
Fax: (850) 234-2451

Tallahassee, FL
1516 Capitol Circle SE, C8
Tallahassee, FL 32301
Phone: (850) 942-3700
Fax: (850) 942-3709

Birmingham, AL
1919 Oxmoor Rd, #235
Birmingham, AL 35209
Phone: (205) 252-8655
Fax: (205) 252-8650

Decatur, AL
1931 Central Parkway SW, Bldg 2, Unit O
Decatur, AL 35601
Phone: (256) 355-7900
Fax: (256) 355-7995

Montgomery, AL
631 CR 29
Prattville, AL 36067
Phone: (334) 358-2110
Fax: (334) 358-2107

Atlanta, GA
665 Antone Street
Atlanta, GA 30318
Phone: (404) 355-9091
Fax: (404) 355-3165

Savannah, GA
16 Foundation Drive
Savannah, GA 31408
Phone: (912) 966-0686
Fax: (912) 966-0076

SWS RESPONSE CENTERS

